

ESGI v. 3.00 MAP Setting Guide

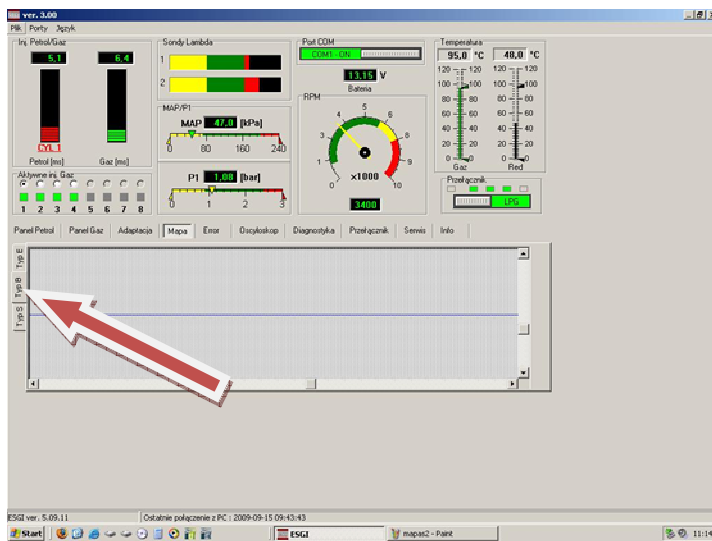
In the new version of ESGI software v.3.0 we have introduced additional maps available in MAP Panel.

MAP Type 1

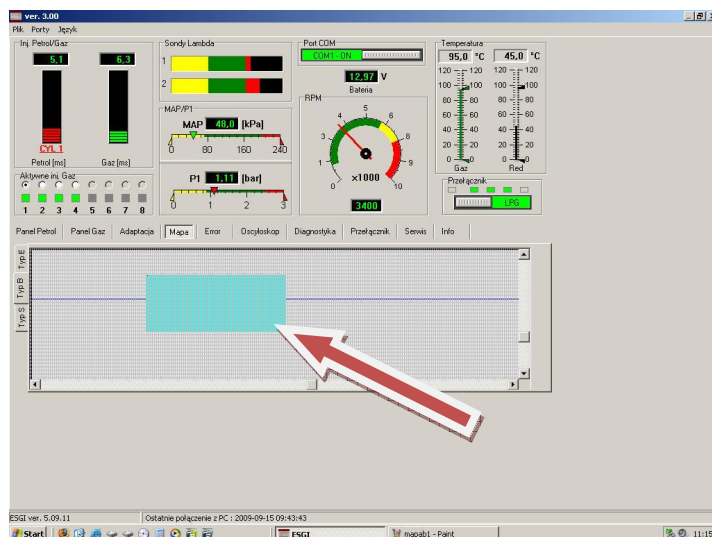
MAP Type 1 is a standard map of ESGI software. Description of all settings can be found on our website www.autogas.pl in Download bookmark - Programming Guide.

MAP Type 2

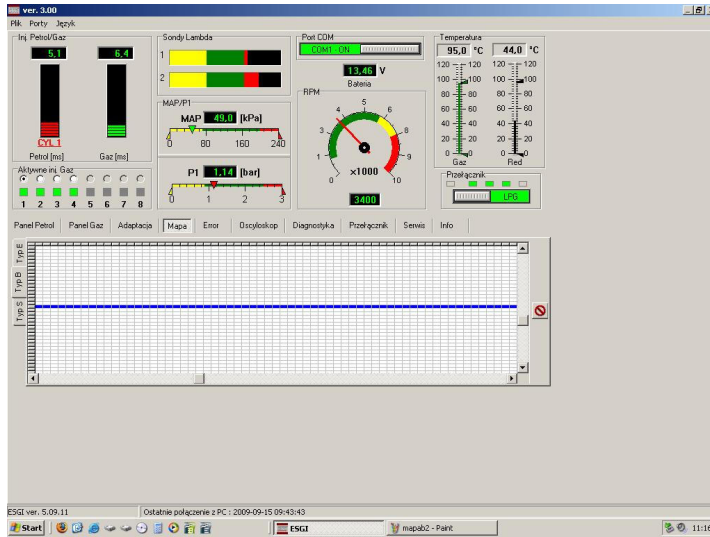
MAP Type 2 was made for precise regulation of correction curve in a graphical way. It provides user with great precision, unavailable in a standard map.



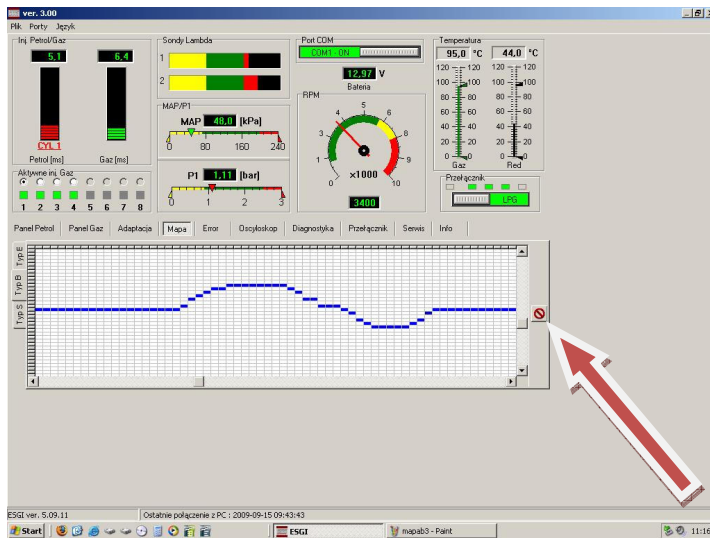
Choose "Type 2" in Panel MAP.



Now choose a scope where you need to change correction parameters. Place the cursor at the beginning of the scope, hold left mouse button and mark the area for regulation. The chosen area will be highlighted.



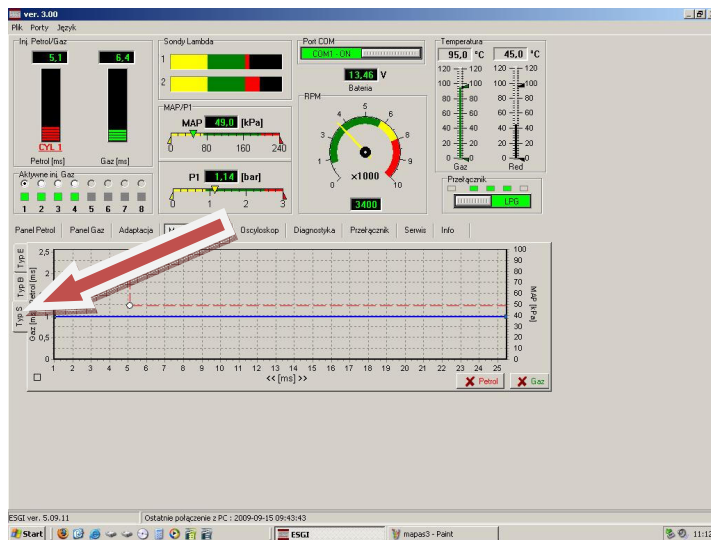
The program will automatically enlarge the chosen area which will allow you to make a precise correction of the curve.



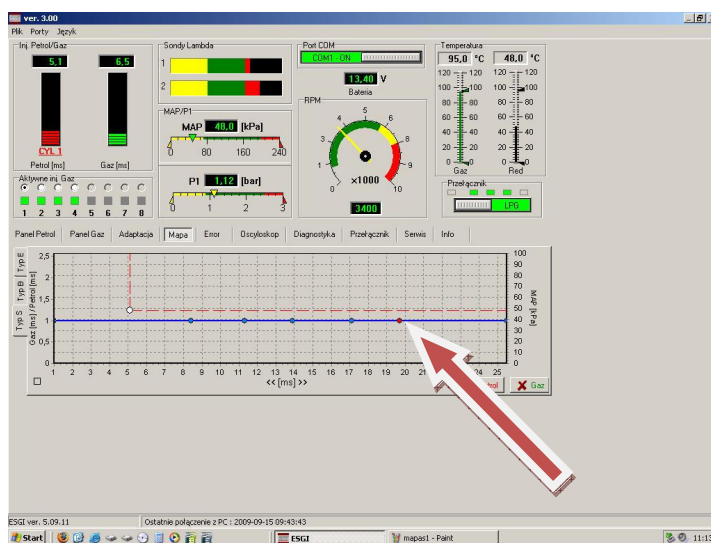
By clicking in appropriate places you can change the correction curve. Information with point parameters will be displayed next to the cursor: injection time (ms) and correction parameter. If you want to go back to full view click enlargement delete button.

Working scope of the window can be moved by X and Y axis. Collected petrol and gas points, and working point are not displayed on MAP Type 2. This Map allows for very precise setting of correction factor.

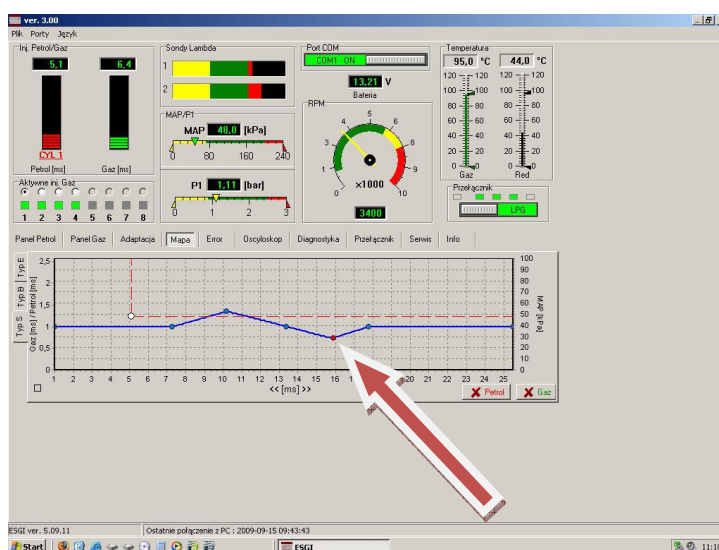
MAP Type 3



MAP Type 3 is very similar to standard map, but the way of changing correction curve is different. To enter MAP Type 3 simply click “Type 3” in Panel MAP.



When you click right mouse button on the curve you add regulation point.



When you mark a point with left mouse button you will be able to move this point on the curve by cursors $\leftarrow \rightarrow$. You can change the shape of the curve by moving the marked point (red) by arrows $\uparrow \downarrow$ up and down. You can delete the marked point by pressing Delete button.